

2-4 Douglas Street SOUTH MELBOURNE, VIC

Funky Office-Suite Creative Business

Excellent Offices

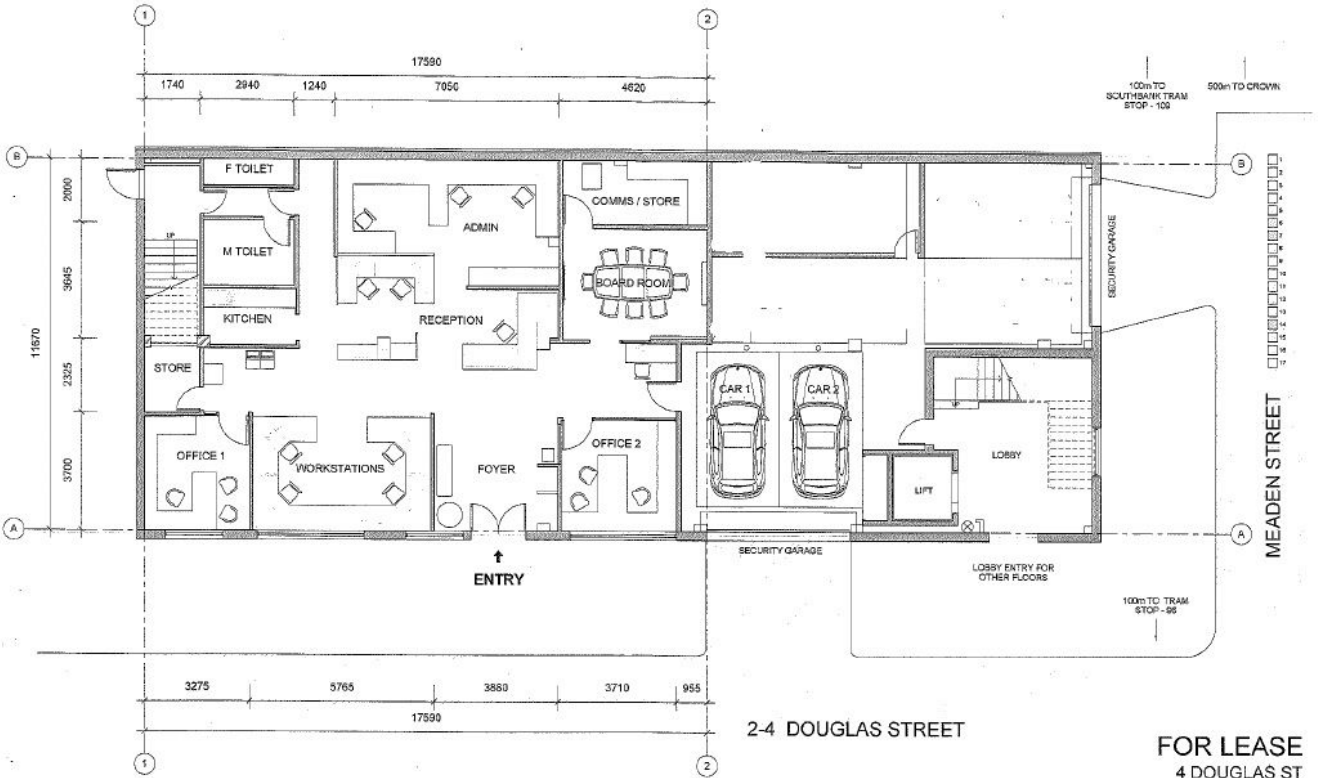
The ground level at 2-4 Douglas Street offers a modern fully fitted office that has high ceilings, natural light, its own kitchen and bathroom amenities along with two secure lock up car spaces. The office is fully air-conditioned and heated providing a very attractive working environment.

- * Excellent natural light.
- * Two secure under cover car spaces.
- * First class quality fit out.
- * Self contained kitchen and bathroom.

Type : Offices

Building Size : 202 m2

Sam Dugdale



① Ground Floor Plan
1:50 @ A1 1:100 @ A3

2-4 DOUGLAS STREET

FOR LEASE
4 DOUGLAS ST

Net Lettable Area 202m² + 2 Car Spaces

FOR LEASE

Created by: **General Arrangements**

Reference: 201302 Expiry Date: A-1000 No. of: 1

Issue: 1 Date: 07

File Name: 000001 SPECIALIST 001 11